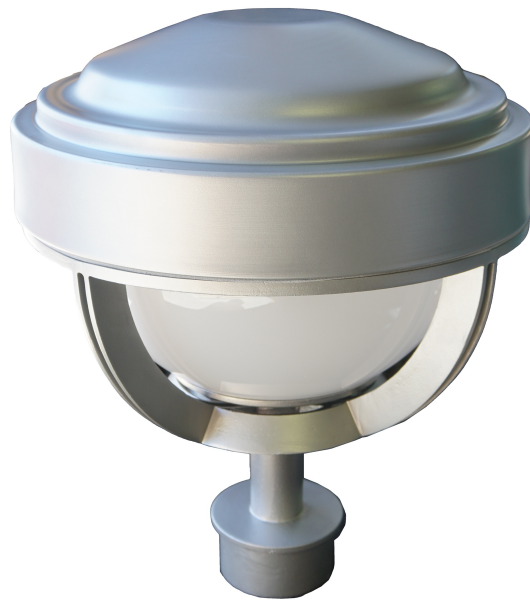




ZUMALIGHTING
QUALITY OUTDOOR SOLUTIONS



MODEL
BUENA VISTA

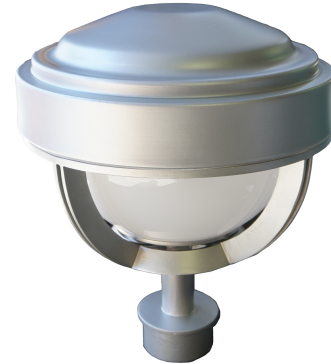
TYPE
LED POST TOP

SERIES
ARCHITECTURAL

ZUMA LIGHTING LLC
325 N LARCHMONT BLVD STE 406, LOS ANGELES, CA 90004
INFO@ZUMALIGHTING.COM • (310) 975-3126 • ZUMALIGHTING.COM

ORDERING INFORMATION

Model BUENA VISTA
Type LED POST TOP
Series ARCHITECTURAL



FIXTURE	WATTAGE	VOLTS	COLOR TEMP	OPTICS	MOUNT	LENS	COLOR	OPTIONS
BNV	20W 30W 40W 60W 80W 90W 120W	U = 120v-277v 8 = 480v	27K = 2700K 3K = 3000K 4K = 4000K 5K = 5000K 57K = 5700K	T2 T3 T4 T5	I = post top A = ●● B = ●●● C = ●●● D = ●●●● E = ●●●● F = ●●●●● G = ●●●●● (wall mount)	CA = Clear Acrylic FA = Frosted Acrylic OA = Opal White Acrylic	DB = Dark Bronze BK = Black WH = White SL = Silver CC = Custom	M = Motion Sensor PC = Photocell D = Dimming S = Surge Protection LS = 180° Cutoff Shield

SPECIFICATIONS

Housing

The fixture housing is constructed from ultra-thick, heavy duty cast aluminum.

Lens

Dome shaped acrylic lens available in clear, frosted, and opal white.

Electrical Components

High performance LEDs utilize state-of-the-art technologies for improved thermal performance. Available in Types II, III, IV, & V with wide choice of color temperatures ranging from CCT(2700K – 6500K). These LEDs are designed to fit LEDIL lenses with IP67 rating.

Finish

Thermoset polyester oven-baked powder coat, in any standard color. Custom colors are available to your specification.

Mounting

The fixture includes a 3-1/2" OD reverse tenon to slip into a 4" OD x .120 wall pole, supplied by others. A 4-1/16" dia. flange is welded between the reverse tenon and the 3" od x 4" tall extension tube and acts as a stop to retain the unit in place on top of the poles.

The poles should be drilled and tapped and include stainless steel Allen screws to secure and retain the unit. The stainless steel Allen screws are to be provided by the pole supplier.

Fixture can also be installed on mounting arms, sold separately.

Dimensions

